

MONTHLY MEMBERSHIP PROGRESS REPORT

District 201Q4

Results as of: 6/30/2024

GMT:

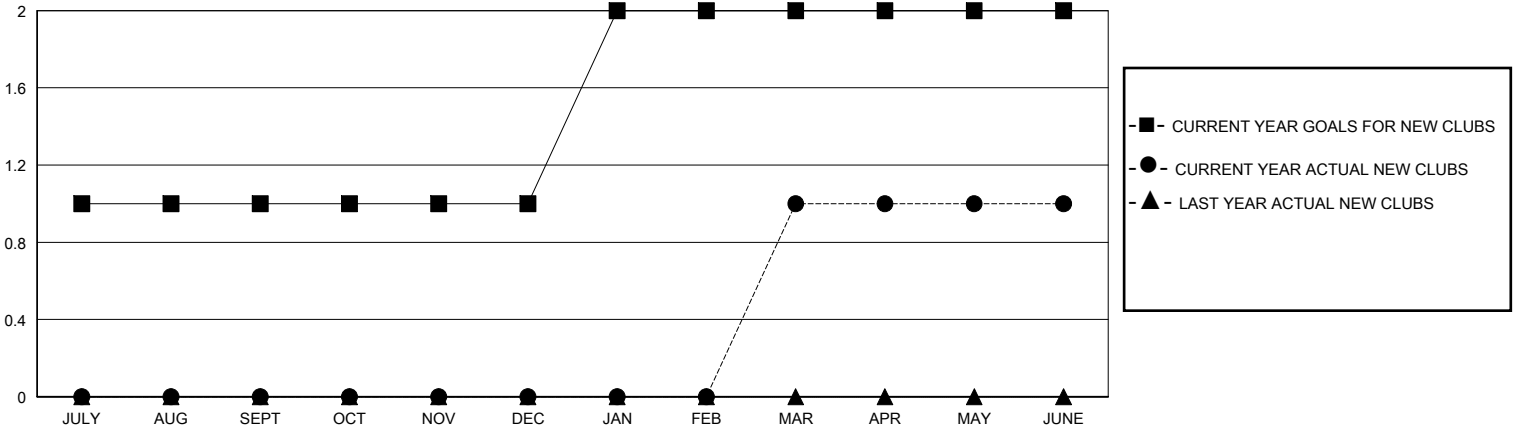
LOCATION AUSTRALIA

GMT CA

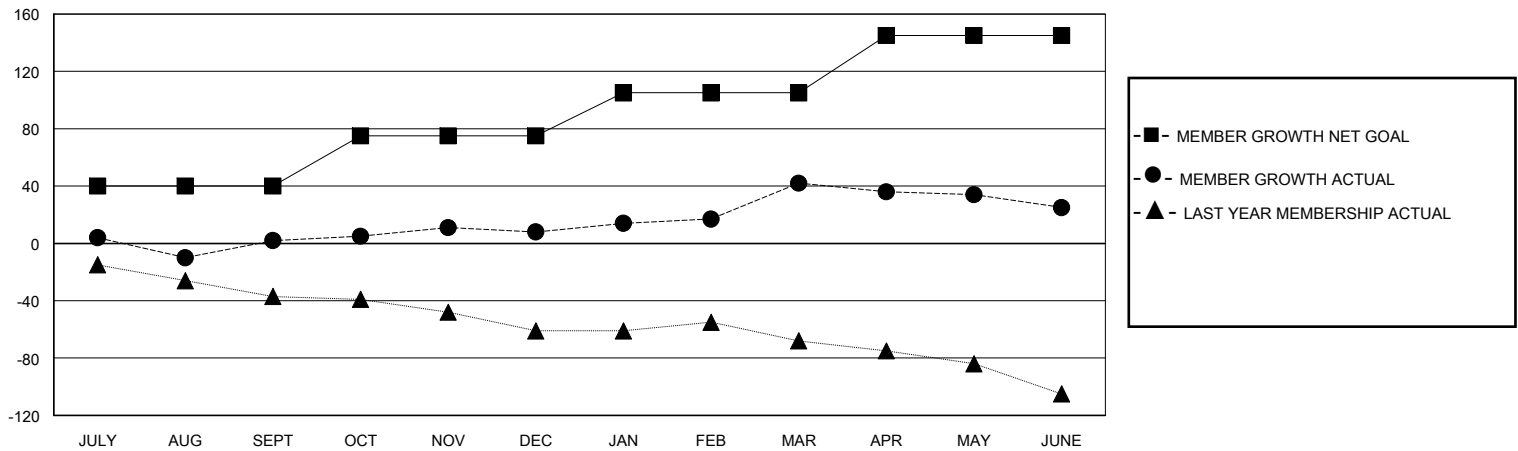
Clubs			
RESULTS FOR 2023-2024			
QUARTER	NEW CLUB GOAL	NEW CLUBS	DROPPED CLUBS
JULY/AUG/SEPT	1	0	1
OCT/NOV/DEC	0	0	0
JAN/FEB/MAR	1	1	0
APR/MAY/JUNE	0	0	2

Members			
RESULTS FOR 2023-2024			
QUARTER	MEMBER GROWTH NET GOAL	MEMBER GROWTH ACTUAL	DROPPED MEMBERS ACTUAL (including transfers)
JULY/AUG/SEPT	40	31	28
OCT/NOV/DEC	35	28	21
JAN/FEB/MAR	30	65	27
APR/MAY/JUNE	40	31	46

GOALS AND ACTUAL NEW CLUBS CUMULATIVE



GOALS AND ACTUAL MEMBERS CUMULATIVE



DROPPED CLUBS: 3	39 CLUBS OF 63 ADDED 1 OR MORE NEW MEMBERS	GENDER DISTRIBUTION	
		MALE 537 (55.48%)	FEMALE 431 (44.52%)
DROPPED MEMBERS		CLICK HERE FOR CUMULATIVE MEMBERSHIP DATA	TOTAL FAMILY UNIT MEMBERS 238
DECEASED 9	CLUB CANCELLED 0		FAMILY MEMBERS PAYING HALF DUES 122
OTHER 111	TOTAL 120		